

Installation Manual



We will ship any damaged or missing parts to you

If you have any problems with your order, send your order ID and product photos to our customer service team. Our team is ready to help.

Email: info@koozzo.com



Warranty Registration

Thank you for your purchase!

To protect your investment, please register your warranty within 60 days of receiving your Koozzo product.

To register your warranty please visit: koozzo.com/pages/warranty-registration

FARMHOUSE KITCHEN SINK COLLECTION

24 INCH: KS1180-2416/ KS1102-2418

28 INCH: KS1103-2820

30 INCH: KS1104-3018/ KS1190-3020/ KS1105-3020

32 INCH: KS1190-3220D

33 INCH: KS1104-3318D/ KS1103-3320

Limited Lifetime Warranty

- We offer a LIMITED LIFETIME WARRANTY on farmhouse sinks that are free of manufacturing defects under normal use. Koozzo Inc. does not cover products purchased from unauthorized sellers.
 - Any farmhouse sink that is proven to have manufacturing defects will be replaced at no extra charge to the original purchaser, provided that it has been used solely in a residential property.
 - This warranty is for regular domestic use only and excludes defect or injury caused by or resulting from misuse, abuse, neglect, accidental damage, alterations, Acts of God, improper installation, or maintenance. Please refer to the installation manual for any maintenance instructions.
 - Any manufacturing defect covered under this warranty must be reported within 30 days of delivery. If any damages were not reported or documented, you will be ineligible for filing a claim or receiving a replacement.
 - All sinks returned must be in their original packaging and include all accompanying accessories, parts, and documentation. We reserve the right to inspect and/or request digital pictures/videos of any sink reported to be defective or damaged prior to sending a replacement.
 - To submit a warranty claim, it is the responsibility of the purchaser to submit a minimum of 3 photographs clearly showing the manufacturing defect. Replacements exclude any labor costs for the removal or reinstallation. Any returns for warranty consideration must include the part(s) in question and the original proof of purchase.
 - To submit a damage claim, it is the responsibility of the purchaser to submit a minimum of 3 photographs clearly showing the damages to the box and product during transportation.
 - One year after the purchase, the purchaser will be responsible for covering all packing, shipping, and transportation costs for replacement parts or accessories.
- ★ All claims must be sent to info@koozzo.com and include the original proof of purchase.

Pre-installation Guide

- Farmhouse sinks are crafted with durable materials that create a distinctive look in any kitchen. This sink is crafted and made of a unique clay capable of being fired at extremely high temperatures, creating a resilient product that is shock-resistant and will withstand heavy use over time. The sink is scratch, stain, and chip-resistant providing everlasting beauty and durability.
- We recommend having a professional install this sink. Each sink is handmade and may have slight variations in dimensions due to the firing process. Be sure to provide enough counter space for the faucet, water supply lines, drain assembly, and garbage disposal (do not overtighten when attaching to the sink). All installation procedures must comply in strict accordance with applicable local plumbing and building codes.

Care & Maintenance

We were given the great opportunity to create a product that would sustain many years of use in your kitchen. We know that from time to time, accidents may occur. Our sink's unique properties give our glaze a great resistance to impact and scratches, while still allowing for easy removal of most hard stains such as tea, coffee, or red wine.

- We strongly recommend NOT to use any harsh abrasives such as scouring liquids or powder, highly concentrated drain cleaners, caustic cleaners containing alkalis, cleaners for tap fittings and steel, scouring pads, steel wool, paint removers, oven cleaners, or aggressive chemical solutions to clean sink surfaces.
- To avoid potential scratches, damages, or stains, do not leave dishes soaking for long periods of time, and coffee grounds or tea bags sitting in the sink.
- Use a soft, non-abrasive sponge or cloth, gentle all-purpose cleaner with mild soap, and warm water for everyday cleaning. Wipe the surface dry with a clean soft cloth after each use. Use a non-abrasive liquid for tougher stains.

Tools



Framing Square



Safety Glasses



Pencil



Tape Measure



Level



Thread Sealant



Wood Shims



Basin Wrench



Drill



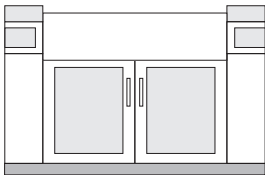
Hacksaw

- ★ Sealant - We recommend the use of a stone, marble, and granite silicone caulk or a general-purpose silicone sealant.

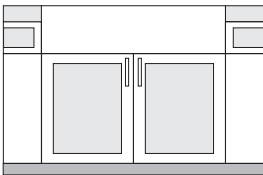
Instructions

Before installation, inspect all sides of the sink for any shipping damages or manufacturing defects. Ensure that all accessories and required pieces are inside. If you find any damages or defects, do not install the sink and contact us immediately.

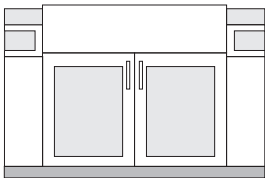
Farmhouse sinks may require custom cabinetry. We recommend consulting with an experienced professional for assistance.



Undermount Installation



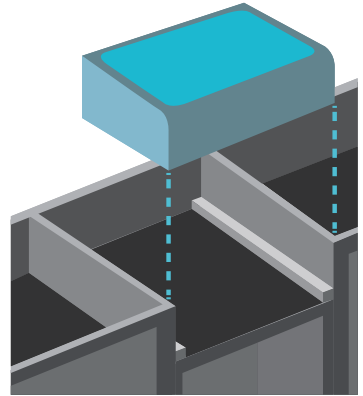
Flush Mount Installation



Built-up Installation

1. Prepare the sink base cabinet

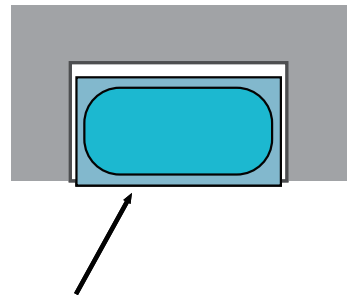
- Build a support frame or install support bars from the front to back along the inner sides of the cabinet. The platform must support the weight of the sink and all attachments such as garbage disposals.
- When the sink is placed onto the platform, make sure the top of the sink is evenly flushed against the bottom of the countertop. Allow some clearance for water supply lines, drains, or garbage disposals, as necessary.
- The support frame should be positioned so that when installed, the sink is in line and level with the top of the cabinet.



Undermount Installation

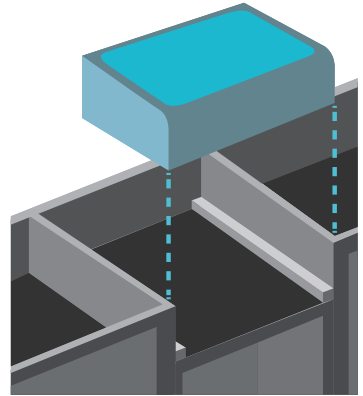
2. Make a template cutout

- Depending on the installation option, make a proper cutout of the countertop. We recommend a $\frac{1}{4}$ " reveal on 3 sides when installed under-mount style. For flush mount or built-up installation, cut the countertop along with outside lines of the sink profile. The front end of farmhouse sinks is designed to be installed $\frac{3}{4}$ " extended out beyond the front end of the countertop. Cut the countertop accordingly.
- After centering the sink, allow some room for faucets and backsplashes. Use a pencil to outline the sink as your guide for the cutout. Allow any reveal before the actual cutting.



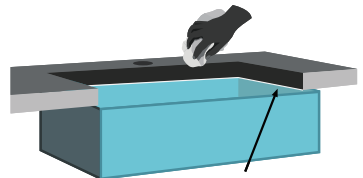
3. Set the sink

- Test the fit of the sink in the opening that was created in the previous steps. The entire weight of the sink should be supported by the support frame.
- Verify that the sink is in line and level with the top of the cabinet. Use shims if necessary to level the sink.
- Set the sink on top of the cabinet or into the cabinet front cutout. Apply sealant if necessary as a gasket between the sink and cabinet.



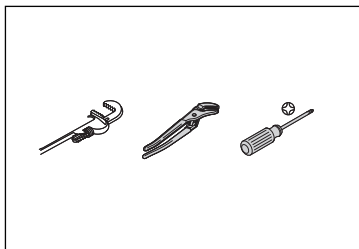
4. Install the countertop

- Carefully clean the bottom of the countertop and top flange of the sink with denatured alcohol. Apply a bead of silicone adhesive (not supplied) around the top edge of the sink.
- Place the countertop onto the sink and remove any excess sealant from the lip or any surfaces with a non-abrasive cleaner.

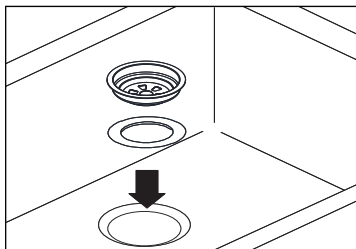


- ★ Consult with a professional if you are unfamiliar with installing kitchen fixtures and plumbing. Koozzo is not liable for any damages to the floor, walls, plumbing, or personal injury during installation.

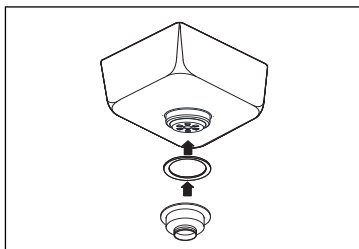
Strainer Installation Guide



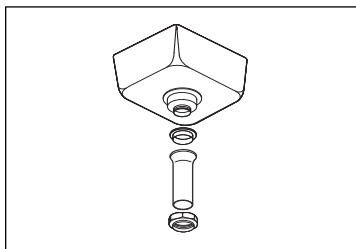
- Installation tools are not provided, please use the appropriate tools.



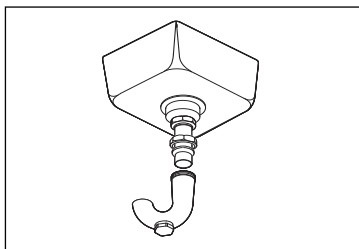
- Take apart the sink strainer. Put the upper strainer body and white gasket into the sinkhole.



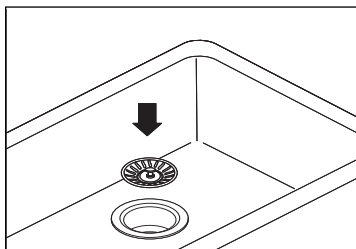
- Connect the lower strainer and black gasket under the sink.



- Connect the drain tail-piece.



- Connect the Trap. Run water and check for leaks.



- Install the basket.



I N S P I R I N N G H O M E S



Scan to Register Online

Contact Us To Learn More

info@koozzo.com / www.koozzo.com